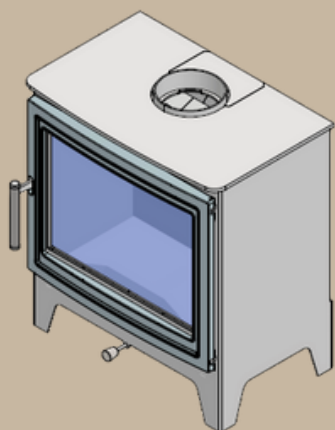




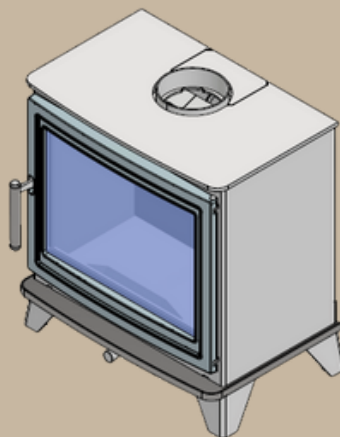
# OXFORD STOVES

CRAFTED FOR WARMTH. BUILT FOR TRADITION.

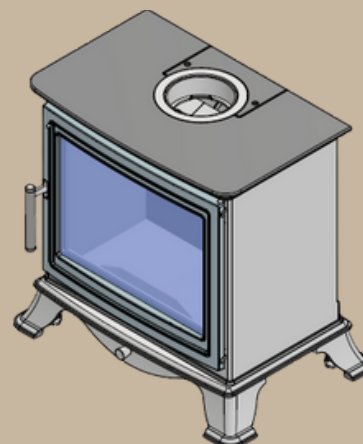
## MODEL PARTS LIST



**Oxford Standard W5**

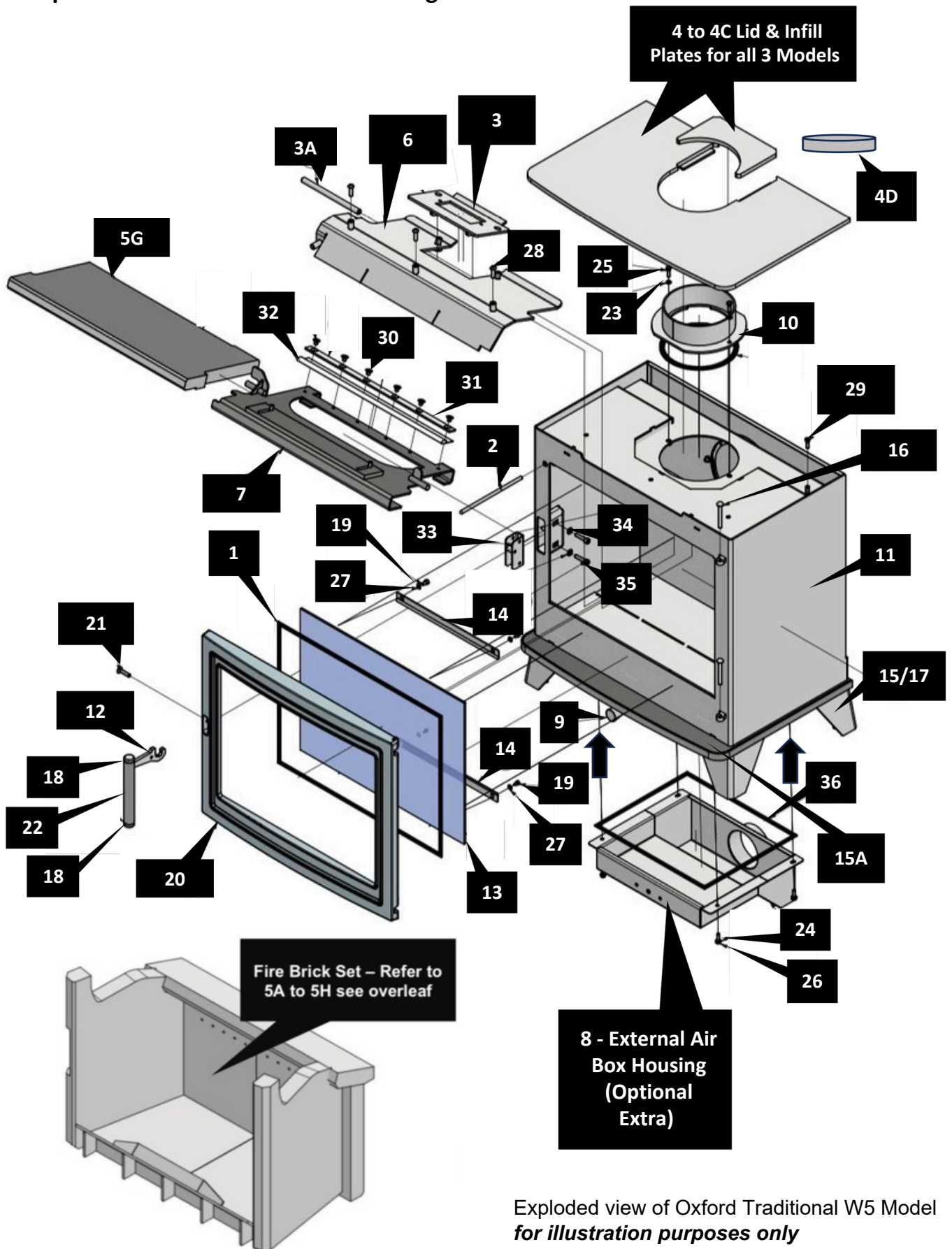


**Oxford Traditional W5**



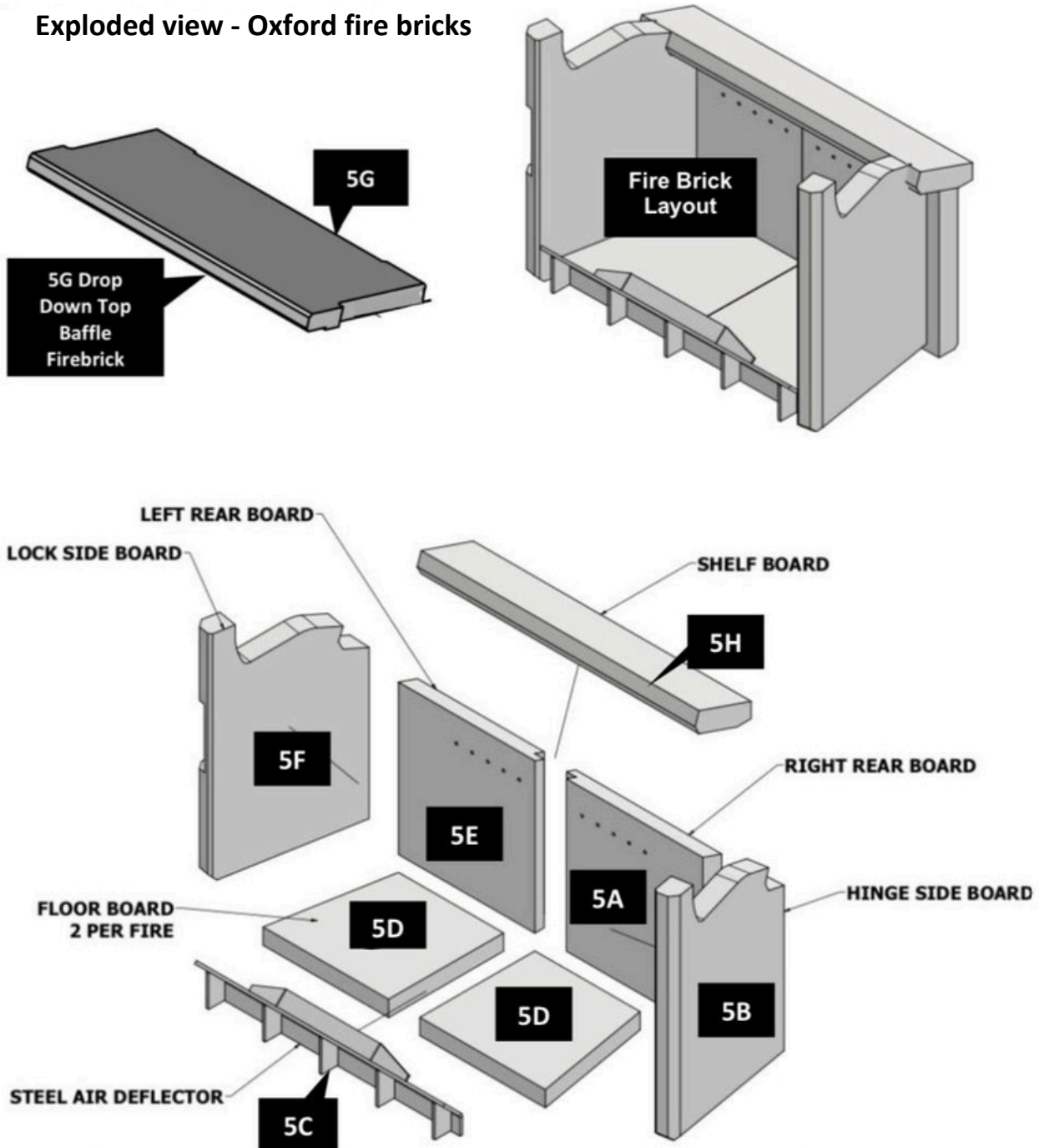
**Oxford Classic W5**

**Exploded view - Oxford wood burning stove**



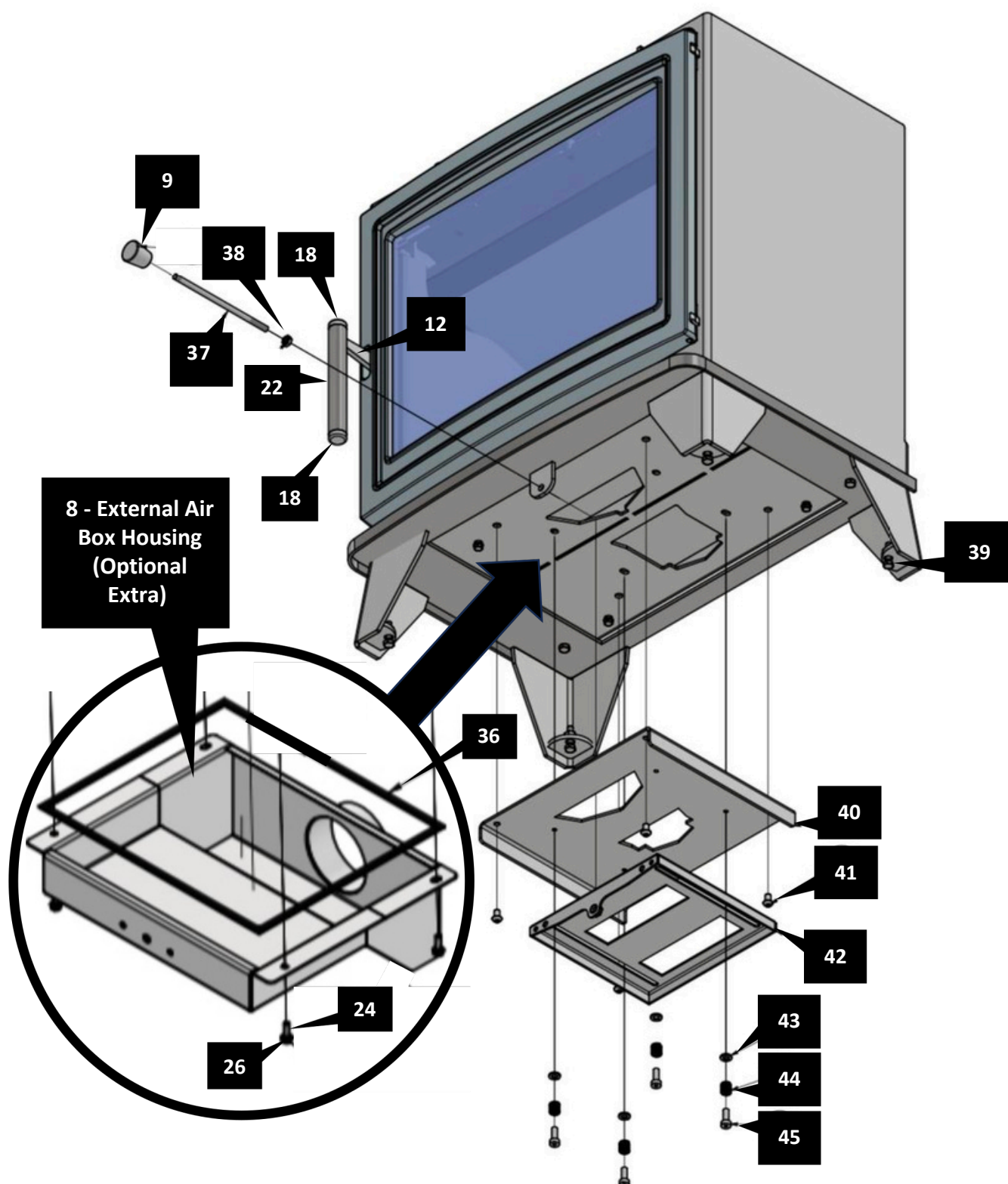
Exploded view of Oxford Traditional W5 Model  
*for illustration purposes only*

## Exploded view - Oxford fire bricks



Item No	Part Number	Description Fire bricks	Qty Per Stove
5A	OX5-111-000	Rear Firebrick RHS	1
5B	OX5-109-000	Side Firebrick RHS – Hinge Side	1
5C	OX5-133-001	Steel Air Deflector	1
5D	OX5-115-000	Floor Firebrick	2
5E	OX5-111-001	Rear Firebrick LHS	1
5F	OX5-125-0001	Side Firebrick LHS – Lock Side	1
5G	OX5-114-000	Drop Down Top Baffle Firebrick	1
5H	OX5-114-001	Top Shelf Firebrick Board	1

## Exploded view - Showing air management system details



Exploded view of Oxford Traditional W5 Model  
*for illustration purposes only*



Item No	Part Number	Description	Qty Per Stove
1	OX5-200-001	Door Rope Seal cut to length complete with end seals	1
2	OX5-164-000	Drop Down Baffle Rod Activator Bar	1
3	OX5-009-001	Removable Steel Baffle Plate for Flue Cleaning - <i>see item 3A</i>	1
3A	OX5-108-008	Flue Hatch Retaining Bar for Flue Cleaning - <i>see item 3</i>	1
4	OX5-011-000	Top Lid for Standard & Traditional Model	1
4A	OX5-011-001	Rear Infill Top Plate for Standard & Traditional Model	1
4B	OX5-011-002	Top Cast Lid for Classic Model	1
4C	OX5-011-003	Rear Cast Infill Plate for Classic Model	1
4D	OX5-011-004	Top Blanking Plate Kit – <i>only required for rear exit flueing</i>	1
5	OX5-010-000	Fire Box Firebrick set Consisting of Parts 5A, 5B, 5D, 5E, 5F, 5G & 5H – 8 Bricks (Excludes 5C which is a steel part)	1
5A	OX5-111-000	Rear Firebrick RHS - <i>individual fire brick</i>	1
5B	OX5-109-000	Side Firebrick RHS - <i>individual fire brick</i>	1
5C	OX5-133-001	Steel Air Deflector – Steel Part	1
5D	OX5-115-000	Floor Firebrick RH & LH (Are the Same)- <i>individual fire brick</i>	2
5E	OX5-111-001	Rear Firebrick LHS - <i>individual fire brick</i>	1
5F	OX5-125-0001	Side Firebrick LHS - <i>individual fire brick</i>	1
5G	OX5-114-000	Drop Down Top Baffle Firebrick - <i>individual fire brick</i>	1
5H	OX5-114-001	Top Shelf Firebrick Board - - <i>individual fire brick</i>	1
6	OX5-009-000	Secondary Bolt in Steel Baffle Housing	1
7	OX5-008-000	Drop Down Baffle Steel Housing – ( <i>item 5G fits into item 7</i> )	1
8	OX5-EAB-000	External Air Box Housing Unit (Optional Extra) <i>also requires items 24, 26 &amp; 36</i>	1
9	OX5-05-004	Stainless Steel Tapered Air Control Knob	1
9A	OX5-05-005-BL	Black Finish - Tapered Air Control Knob (Optional Extra)	1
10	OX5-003-000	Flue Collar including Sealing Rope	1
11	OX5-001-000	Main Steel Body	1
12	OX5-131-SA	Door Handle Steel Profile Inner Only	1
13	OX5-TS5-000	Door Glass Panel complete with Rope Seal fitted	1
14	OX5-GC-001	Door Glass Retaining Bar – <i>see item 19 &amp; 27</i>	2
15	OX5-SPL-TM	Plinth Assembly for Traditional Model Only	1
15A	OX5-ASH-SM	Front Bolt-on Ash Lip & Fixings for Standard Model Only	1
16	OX5-CDH-PIN	Door Hinge Pin – supplied as a pair	1 PAIR
17	OX5-CPL-CM	Cast Plinth Assembly for Classic Model including 4 x Feet	1
18	OX5-HDL-EB/SS	Handle End Bosses – Stainless Steel	2
18A	OX5-HDL-EB/BL	Handle End Bosses – Black Finish – (Optional Extra)	2
19	OX5-FAST-001	Fastener for Door Glass Retaining Bar – <i>see item 14 &amp; 27</i>	4
20	OX5-DOOR-CA	Cast Door for all Models	1
21	OX5-FAST-002	Handle Pivot Fastener	1
22	OX5-HDL-TU/SS	Handle Centre Tube – Stainless Steel	1

Item No	Part Number	Description	Qty Per Stove
22A	OX5-HDL-TU/BL	Handle Centre Tube – Black Finish – (Optional Extra)	1
23	OX5-FAST-003	Spring Washer Fastener - <i>see item 25</i>	2
24	OX5-FAST-004	Spring Washer Fastener – <i>see item 26 – 8 External Air box</i>	4
25	OX5-FAST-005	Flue Collar Fixing Fastener – <i>see item 23</i>	2
26	OX5-FAST-006	External Air Box Fastener – <i>see item 24 &amp; 8</i>	4
27	OX5-FAST-007	Glass Support Spring Washer – <i>see items 14 &amp; 19</i>	4
28	OX5-FAST-008	Fixed Baffle Fastener – <i>see item 6</i>	3
29	OX5-FAST-009	Pressure Test Point Sealing Screw	1
30	OX5-159-006	P Rope Drop Down Baffle Seal – <i>see items 31 &amp; 32</i>	1
31	OX5-159-003	P Rope Retainer Plate – <i>see items 30 &amp; 32</i>	1
32	OX5-FAST-010	Drop Down Top Baffle P Rope Fastener – <i>see items 30 &amp; 31</i>	6
33	OX5-RLA-000	Adjustable Door Lock Roller Catch - <i>see items 34 &amp; 35</i>	1
34	OX5-FAST-011	Washer for Adjustable Door Lock Roller Catch Fastener - <i>see items 33 &amp; 35</i>	2
35	OX5-FAST-012	Adjustable Door Lock Roller Catch Fastener - <i>see items 33 &amp; 34</i>	2
36	OX5-135-004	External Air Box Gasket Seal – <i>see item 8</i>	1
37	OX5-CB1-001	Air Control Bar – Stainless Steel – <i>see item 38 &amp; 9</i>	1
38	OX5-FAST-013	Air Control Rod Locking Nut – <i>see item 37 &amp; 9</i>	1
39	OX5-FAST-014	Foot Adjustment Screw	4
40	OX5-012-000	Bottom Air Slider Fixed Plate	1
41	OX5-FAST-015	Fastener for Bottom Air Slider Fixed Plate – <i>see item 40</i>	4
42	OX5-126-000	Stainless Steel Bottom Air Slider Moving Plate – <i>see items 43, 44 &amp; 45</i>	1
43	OX5-FAST-016	Tension Spring Holding Spacer Ring for Air Slider Assembly	4
44	OX5-SPR-001	Tension Spring for Air Slider Assembly – Moving Plate	4
45	OX5-FAST-017	Tension Spring Holding Fastener for Air Slider Moving Plate	4
46	OX5-PAINT-001	Touch Up Paint – Colour Black	1